

Laboratory Performance Overview
Unassayed Chemistry

Lab 152

Lot 16610

BIO-RAD

Data For: 12-2012
Lot Exp: 12-31-2012
Printed: 05-14-2013
Page 2

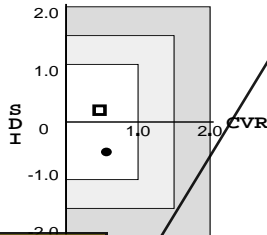
UNITY

Level 1

Bilirubin, Total/TBIL

Jendrassik Grof
Beckman Coulter UniCel DxC 800
Dedicated Reagent
µmol/L

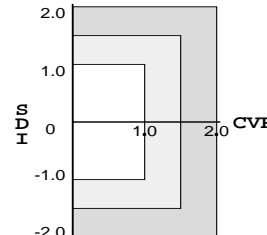
	Peer	Method
SDI:	-0.52	0.20
CVR:	0.6	0.5
# Labs:	94	244
# Points:	4	



Calcium

ISE indirect
Beckman Coulter UniCel DxC 800
Dedicated Reagent
mmol/L

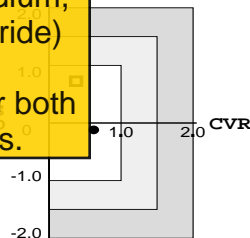
	Peer	Method
SDI:	0.01	-0.04
CVR:	2.5	2.4
# Labs:	95	105
# Points:	5718	6265



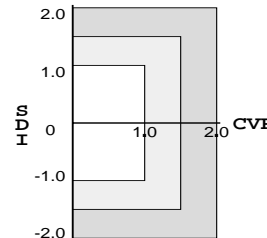
Level 2

The other ISE parameters (sodium, potassium, chloride) also show an increase CVI for both levels of controls.

	Peer	Method
SDI:	-0.12	0.72
CVR:	0.6	0.4
# Labs:	94	245
# Points:	4716	9699



	Peer	Method
SDI:	-0.15	-0.20
CVR:	3.8	3.7
# Labs:	95	105
# Points:	5635	6183





Lab 152

Laboratory Comparison Report

Unassayed Chemistry

Lot 16610

Data For: 12-2012

Lot Exp: 12-31-2012

Printed: 05-14-2013

Page 3

Analyte Method Units Temp Instrument/Kit Reagent	Level 1		Level 2		
	Mon	Cum	Mon	Cum	
Bilirubin, Direct/BC (DBIL)					
Diazotization µmol/L					
Beckman Coulter UniCel DxC 800					
Dedicated Reagent					
Your Lab	Mean	4.00	4.42	12.20	12.75
	SD	0.380	0.523	0.560	0.649
	CV	9.5	11.8	4.6	5.1
	(Peer) CVR	0.5	0.7	0.6	0.7
	(Method) CVR	0.4	0.5	0.2	0.2
	(Peer) SDI	-0.49	-0.15	-0.26	0.07
	(Method) SDI	-0.78	-0.50	-0.76	-0.61
	# Points	52	1016	50	1031
Peer Group	Mean	4.44	4.54	12.43	12.69
Beckman Coulter UniCel DxC Series	SD	0.894	0.805	0.896	0.913
	CV	20.1	17.7	7.2	7.2
	# Points	4265	107995	4297	107200
	# Labs	88	155	90	154
Group Values by Method					
	Mean	4.97	5.01	14.69	14.71
	SD	1.23	1.19	3.26	3.22
	CV	24.8	23.7	22.2	21.9
	# Points	14059	348535	13722	339932
	# Labs	359	682	357	667
Bilirubin, Total/TBIL					
Jendrassik Grof µmol/L					
Beckman Coulter UniCel DxC 800					
Dedicated Reagent					
Your Lab	Mean	20.90	21.12	94.20	93.21
	SD	1.00	1.39	1.78	1.98
	CV	4.8	6.6	1.9	2.1
	(Peer) CVR	0.6	0.8	0.6	0.6
	(Method) CVR	0.5	0.6	0.4	0.4
	(Peer) SDI	-0.52	-0.51	-0.12	-0.49
	(Method) SDI	0.20	0.16	0.72	0.39
	# Points	57	1086	54	1095
Peer Group	Mean	21.87	22.10	94.55	94.77
Beckman Coulter UniCel DxC Series	SD	1.86	1.93	2.87	3.18
	CV	8.5	8.7	3.0	3.4
	# Points	4745	123775	4716	122445
	# Labs	94	166	94	161
Group Values by Method					
	Mean	20.47	20.76	90.89	91.31
	SD	2.14	2.26	4.61	4.84
	CV	10.5	10.9	5.1	5.3
	# Points	9699	244690	9699	241940
	# Labs	244	464	245	457
Calcium					
ISE indirect mmol/L					
Beckman Coulter UniCel DxC 800					
Dedicated Reagent					
Your Lab	Mean	2.08	2.08	2.96	2.98
	SD	0.105	0.036	0.180	0.054
	CV	5.0	1.7	6.1	1.8
	(Peer) CVR	2.5	1.0	3.8	1.3
	(Method) CVR	2.4	1.0	3.7	1.3
	(Peer) SDI	0.01	-0.03	-0.15	0.12
	(Method) SDI	-0.04	-0.03	-0.20	0.11
	# Points	57	1074	60	1149

BIO-RAD

Lab 152

Laboratory Comparison Report

Unassayed Chemistry

Lot 16610

Data For: 12-2012
 Lot Exp: 12-31-2012
 Printed: 05-14-2013
 Page 4

UNITY

Analyte Method Units Temp Instrument/Kit Reagent		Level 1		Level 2	
		Mon	Cum	Mon	Cum
Peer Group Beckman Coulter UniCel DxC Series	Mean	2.08	2.08	2.97	2.97
	SD	0.043	0.036	0.047	0.042
	CV	2.1	1.7	1.6	1.4
	# Points	5718	167806	5635	166601
	# Labs	95	168	95	164
Group Values by Method					
	Mean	2.08	2.08	2.97	2.97
	SD	0.043	0.036	0.049	0.043
	CV	2.1	1.7	1.7	1.4
	# Points	6265	190538	6183	189504
	# Labs	105	197	105	194
Carbamazepine (Tegretol)					
Immunoturbidimetric µmol/L					
Beckman Coulter UniCel DxC 800					
Dedicated Reagent					
Your Lab	Mean	12.00	12.00	69.00	67.43
	SD	0.700	0.543	2.60	2.61
	CV	5.8	4.5	3.8	3.9
	(Peer) CVR	1.0	0.8	0.9	0.8
	(Method) CVR	0.9	0.7	0.9	0.8
	(Peer) SDI	-0.21	0.09	0.31	0.26
	(Method) SDI	-0.39	-0.28	0.22	-0.09
	# Points	54	874	52	880
	# Labs				
Peer Group Beckman Coulter UniCel DxC Series	Mean	12.15	11.94	68.11	66.59
	SD	0.745	0.688	2.83	3.31
	CV	6.1	5.8	4.2	5.0
	# Points	1028	25968	1029	26182
	# Labs	26	55	27	55
Group Values by Method					
	Mean	12.31	12.22	68.36	67.74
	SD	0.797	0.799	2.96	3.45
	CV	6.5	6.5	4.3	5.1
	# Points	1752	45484	1760	45683
	# Labs	61	128	62	128

Chloride

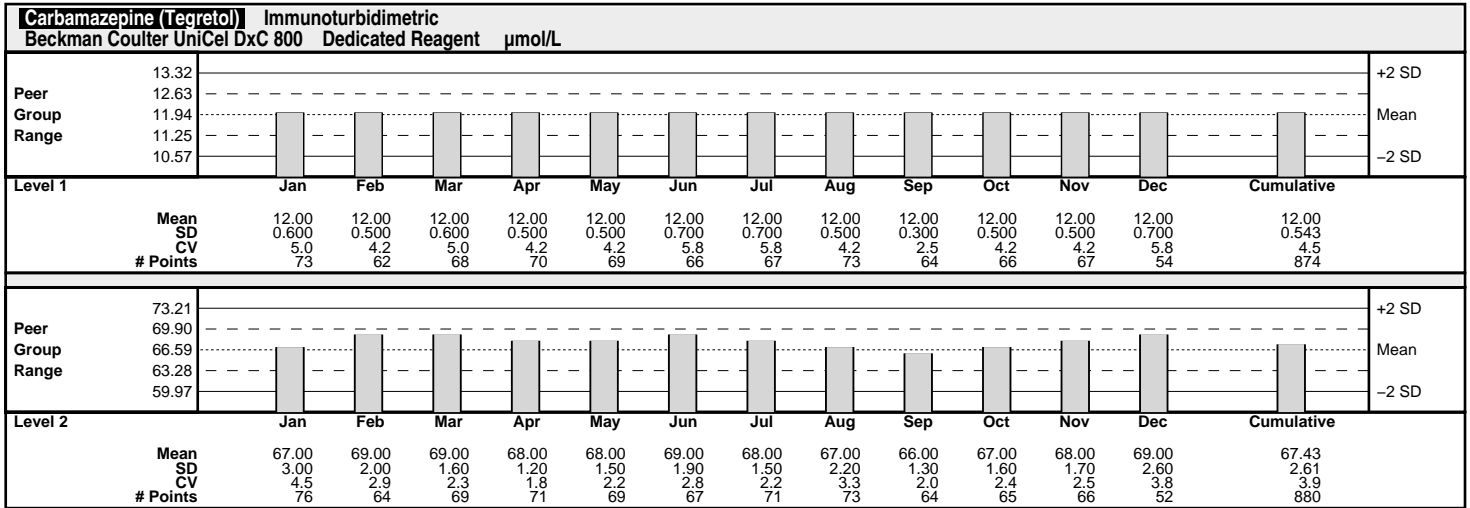
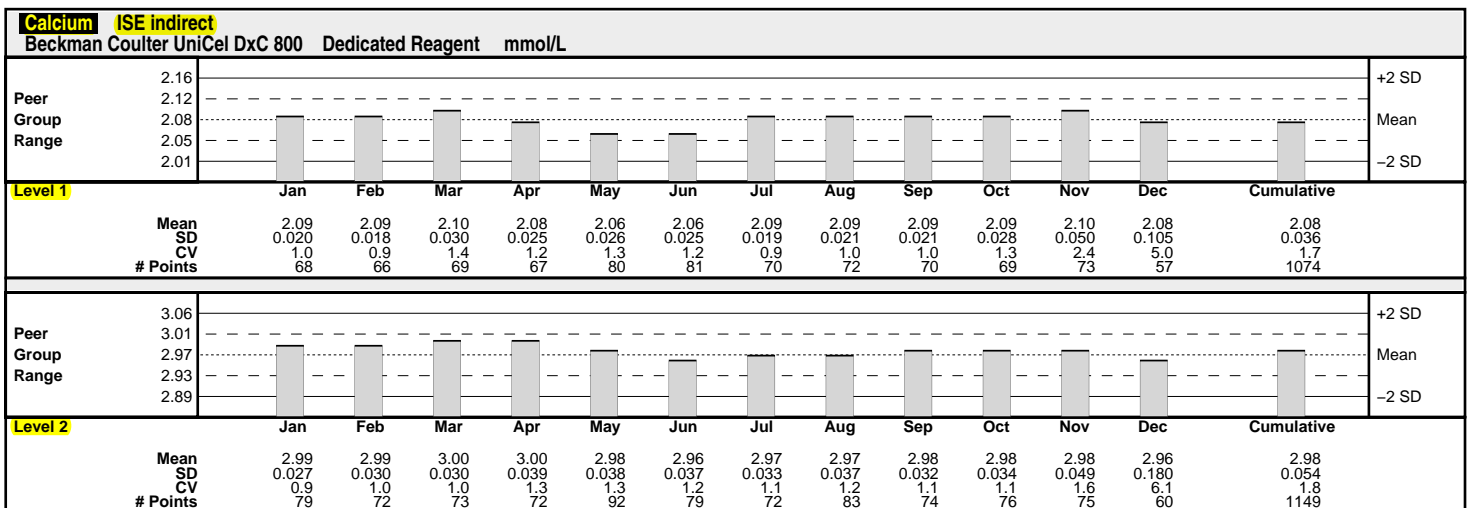
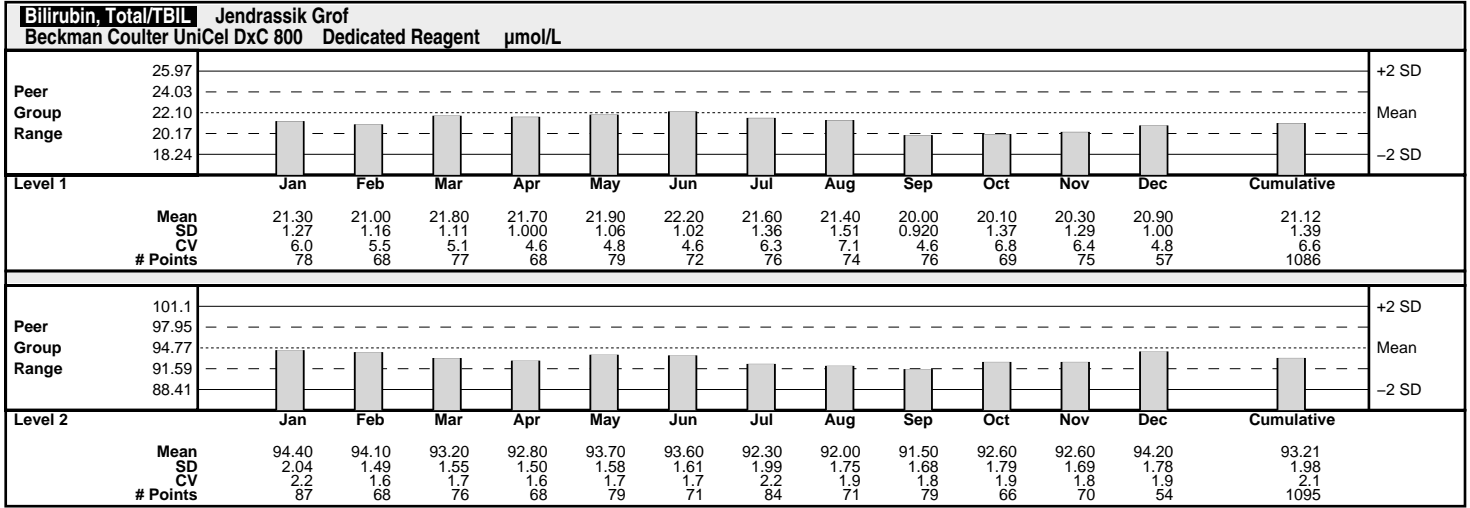


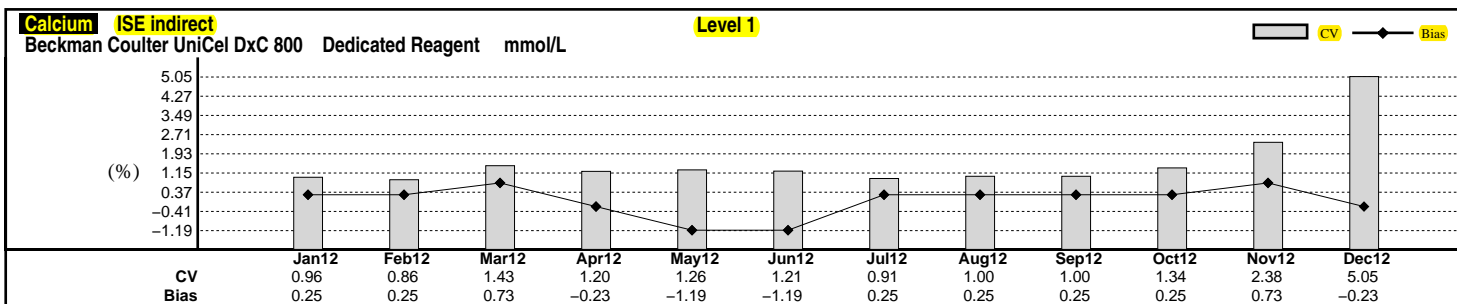
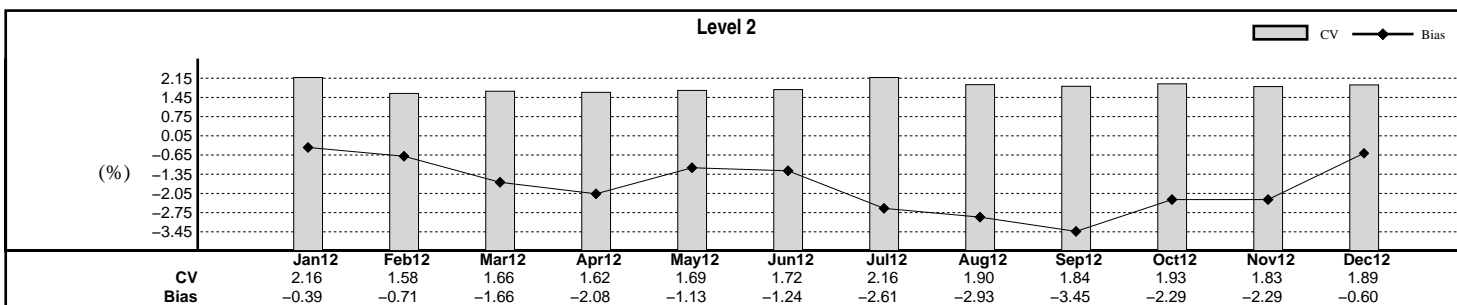
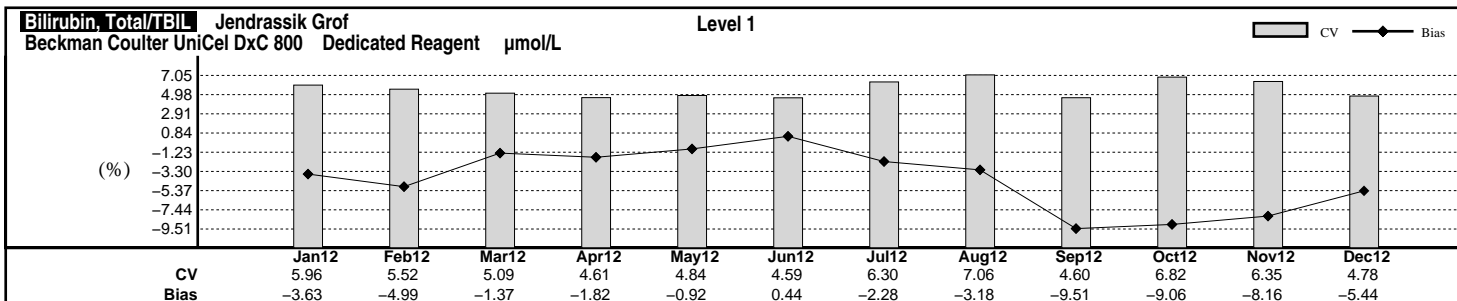
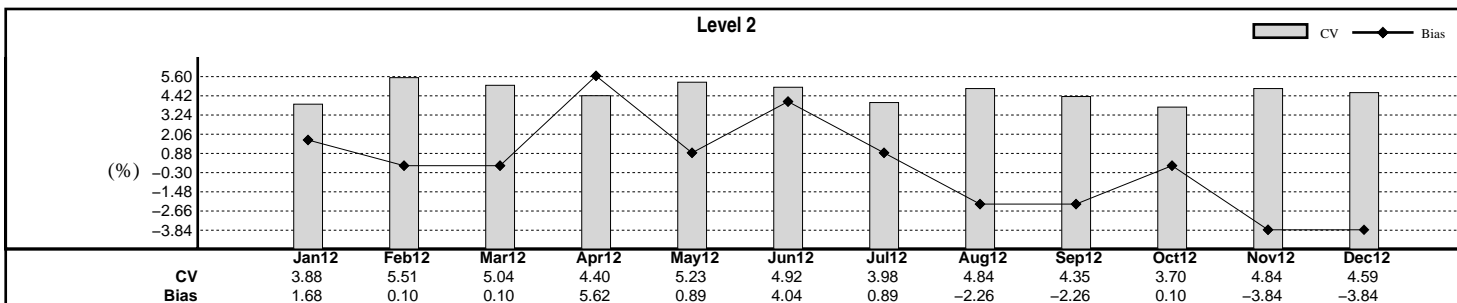
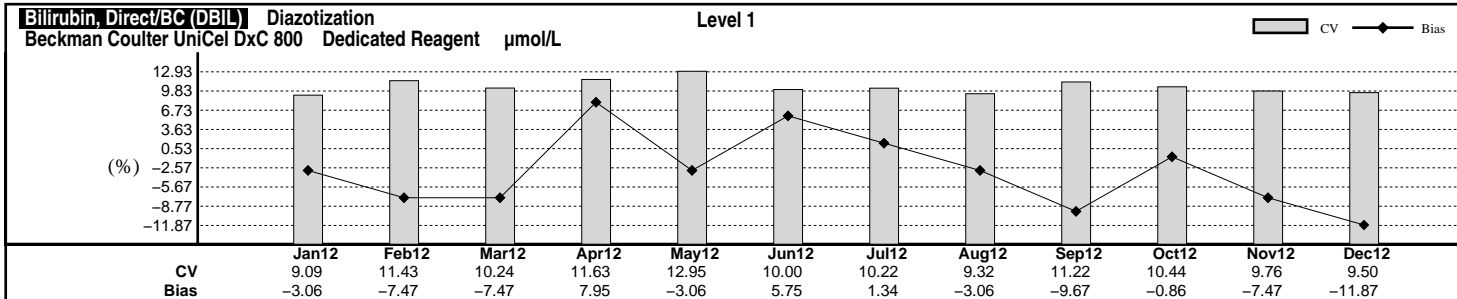
Lab 152

Laboratory Histogram Unassayed Chemistry

Lot 16610

Data For: 12-2012
Lot Exp: 12-31-2012
Printed: 05-14-2013
Page 3







Lab 152

Bias & Imprecision Histogram Unassayed Chemistry

Lot 16610

Data For: 12-2012
Lot Exp: 12-31-2012
Printed: 05-14-2013
Page 4

